



عمران مدرن  
بازار نوین ارتباطات ساختمانی

# نصب آسانسور و تهیه کلیه قطعات

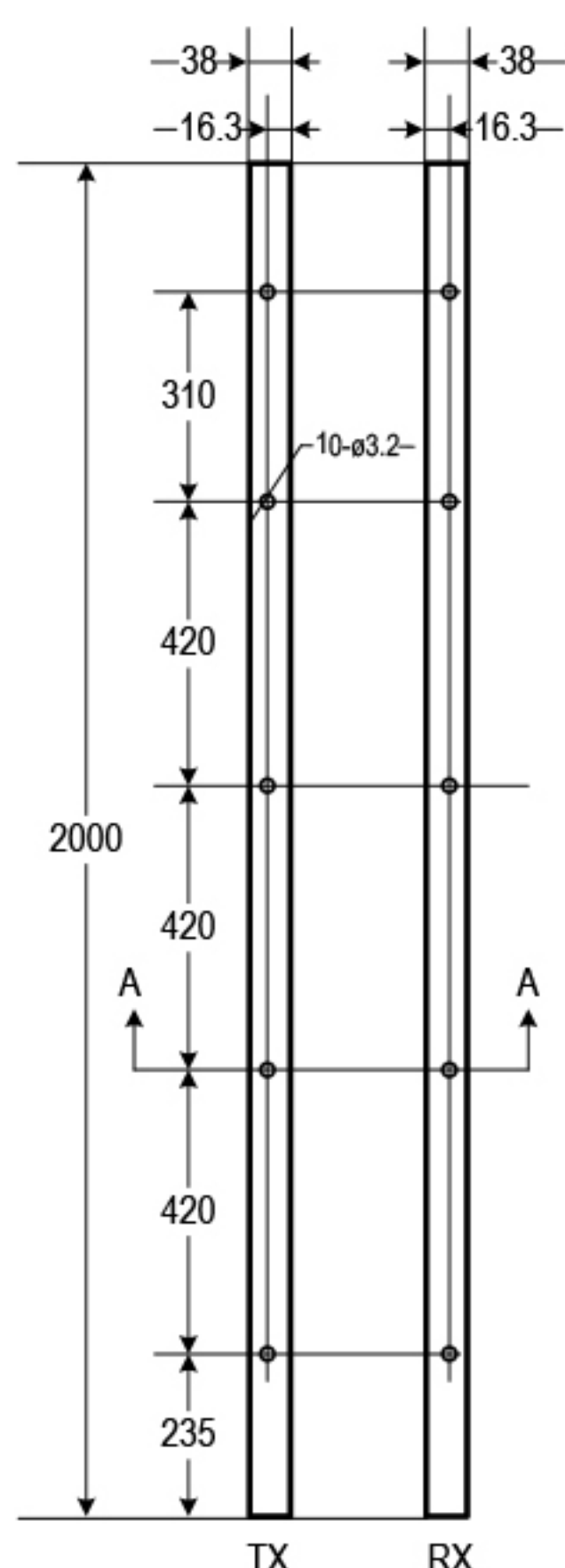
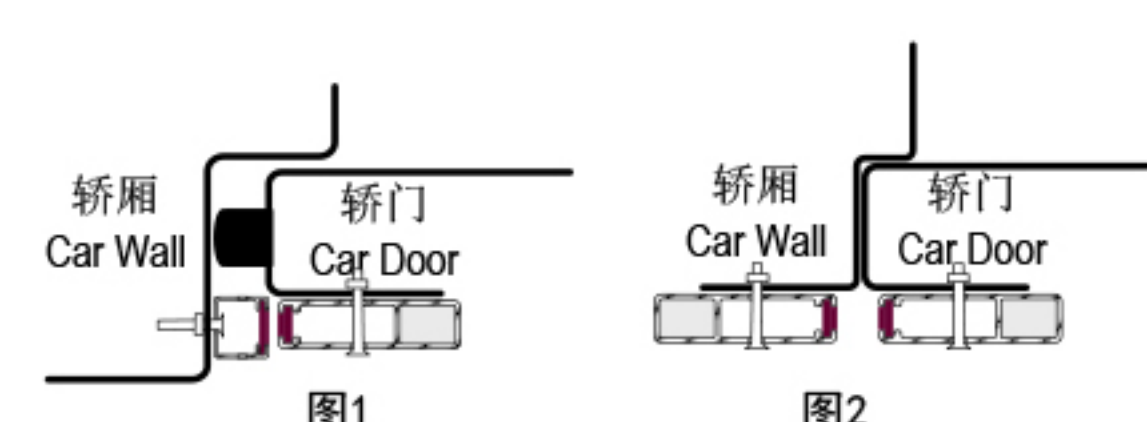
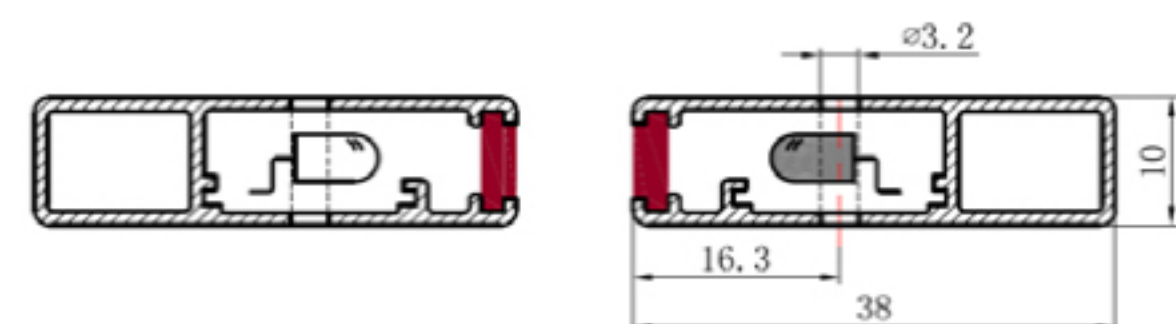
سراسر کشور



با قیمت استثنایی و اکیپ متخصص

برای مشاوره رایگان تماس بگیرید

02162999675



B5, B6, B7, B8 安装孔位  
B5, B6, B7, B8 Mounting holes

## Model Definitions



example: WECO-917 B 7 1 - AC220

Power and system output options:

- AC220: 185V~290VAC,50/60Hz power box, 1NO/1NC relay output
- AC110: AC110V±20%,50/60Hz power box, 1NO/1NC relay output
- DC24A: 24VDC±10% power box, 1NO/1NC relay output
- DC24B: 15~30VDC direct input, 1NO NPN output
- DC24C: 15~30VDC direct input, 1NC NPN output
- DC24D: 15~30VDC direct input, 1NO PNP output
- DC24E: 15~30VDC direct input, 1NC PNP output
- DC24F: 15~30VDC direct input, 1NC relay output
- DC24G: 15~30VDC direct input, 1NO relay output
- DC24H: 24VDC safety function power box
- DC24S: 15~30VDC direct input, intelligent light curtain

Connection Cable:

- 1: 3.5mx2pcs,for standard central-opening lift doors
- 2: 3.5mx2pcs,for side opening lift doors
- 3: 2.5m、4.5mx1pcs,for new side opening lift doors
- 4: 5mx2pcs,for Two Panel central-opening lift doors

TX/RX Number:

- 6: 17 Diode sets
- 4: 20 Diode sets
- 7: 32 Diode sets
- 5: 36 Diode sets
- 8: 40 Diode sets
- 9: 48 Diode sets

WECO-917 series: WECO-917

Technical Parameters		917B	
<b>Technical Features</b>			
Number of Infra Red Diodes		17 Diode sets	32 Diode sets
Response Time	relay output	45ms	61ms
	transistor output	21ms	37ms
Scanning Beams		94~33 Beams	154~94 Beams
infrared diodes range		118mm	59mm
The minimum door opening		≤20mm	
The Maximum door opening		≥1800mm	
Redundancy (One transmitter shielded after 120s detected absent)		○	●
Tolerance		Up/down: ±15mm/ 7° Back/forth: ±3mm/ 5°	
Detecting Range		0 ~ 4000mm	
Operating Temperature		-20°C ~ +65°C	
<b>Reliability</b>			
Light Immunity		100000Lux.	
Protection Level		IP54	
Vibration		Vibration 20 to 500Hz 4hrs per X-Y-Z axis, sinusoidal vibration 30Hz rms 30mins per X-Y-Z axis	
Environment test (high&low temperature)		GB/T2423.1—GB/T2423.4	
<b>EMC</b>			
EN12015 EN12016		general circuit level	
<b>Function</b>			
LED Interpretation		Yellow LED power indicator in receiver 	Red LED status indicator in receiver 